



**2/12 Esmeralda Street Cambooya QLD**

3 2 1

2/12 Esmeralda Street, CAMBOOYA

This three-bedroom unit, situated in a quiet country town with only a 25-minute drive to Toowoomba won't last long. A reserved Unit built for your peace and enjoyment.

**Land Size** : 148 sqm

**View** : <https://www.theroweteam.agency/lease/qld/toowoomba-district/cambooya/residential/unit/8000975>

Features include:

- ? Main bedroom with walk-in robe and ensuite.
- ? 2 other bedrooms with built-ins
- ? Open plan lounge and dining with reverse air conditioning

- \* Well position kitchen with dishwasher
- \* Dining room area
- \* Single lockable remote garage.
- \* Internal laundry

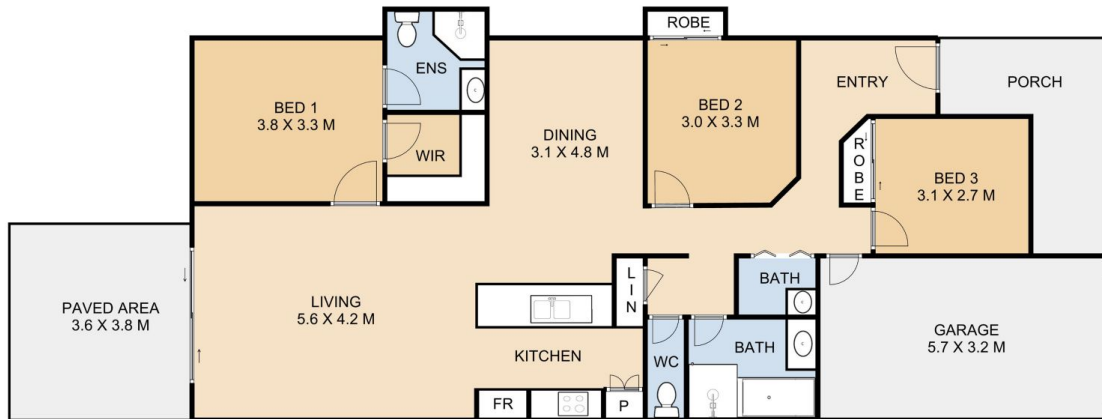
This property is fully fenced with a double-side gate access. The tenant is responsible for full consumption as



**Isabel Rowe**  
07 4699 0981



**Joanne Rowe**  
0419 664 034



*The* **ROWE TEAM** Agency 12b Esmeralda Street, **Cambooya**

This plan is for representational purposes only. All dimensions displayed are approximate and shouldn't be solely relied upon. Floorplan by Statik Illusions.

